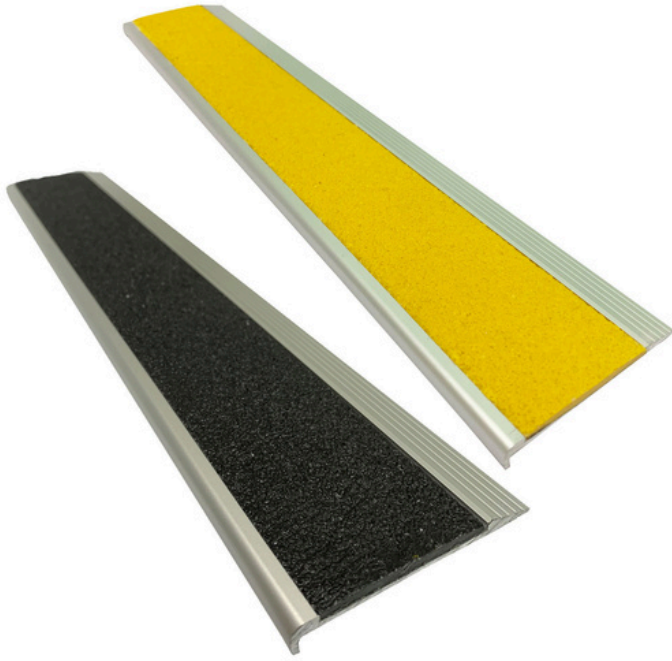


**Aluminium Stair Nosing w/ Tough Fibreglass
Anti Slip Insert 75mm x 10mm - Per Metre**

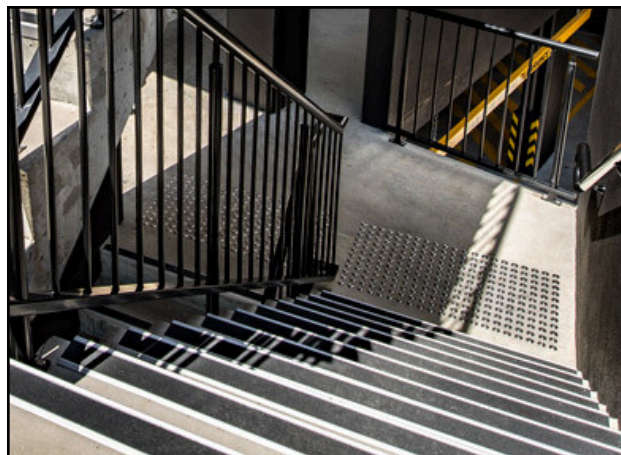


COLOUR OPTIONS:



FREE CUSTOM CUT TO SIZE

**We will cut your stair nosing to the lengths
you require at no extra cost!**



Specifications	
SKU:	TAS7510Y (yellow) TAS7510B (black)
Description:	Aluminium Stair Nosing w/ Tough Fibreglass Anti Slip Insert
Material:	Silver Aluminium w/ Yellow or Black Insert
Colour:	Safety Yellow or Black
Width:	75mm
Nose / Face:	10mm
Slip Rating:	P5
Fixing Options:	No holes drilled and no fixings supplied OR We drill countersunk holes for you and supply screws
Lead Time:	Lead time: 3 - 5 business days for custom cut lengths
Max Length Per Piece: <i>(due to shipping restrictions)</i>	The longest stair nosing available for online orders is in 2-meter cuts. For lengths exceeding this, please contact us for a custom quote at 1300 049 246 or sales@safetyxpress.com.au
Compliance:	Australian compliant meeting the national building code standards - AS/NZS 1428.1 - 2009 when installed according to the standard.

The Tough Anti Slip Stair Nosing has a 10mm Bull Nose face with a 3mm heavy duty fibreglass hard insert and is recommended for indoor & outdoor environments and designed for use in high traffic areas.

This stair nosing can be installed with glue or fixed in place using screws onto a variety of substrates including Timber, Concrete, Bitumen, Tiles, Vinyl, Rubber and Carpet.



Aluminium Stair Nosing w/ Tough Fibreglass Anti Slip Insert 75mm x 10mm - Per Metre

No Countersunk Holes & No Screws Supplied:

1. Clean the surface of where the stair nosing is being applied to and ensure it is free from any dust or debris.
2. Apply adhesive to the underside of the stair nosing. We recommend using Selleys Hold Up Adhesive to glue down.
3. Position the stair nosing in place and gently press down to distribute the adhesive evenly.

Countersunk Holes Drilled & Screws Supplied:

1. Clean the surface of where the stair nosing is being applied to and ensure it is free from any dust or debris.
2. Apply supplied screws to the drilled countersunk holes.
3. Drill the screws into the surface.

